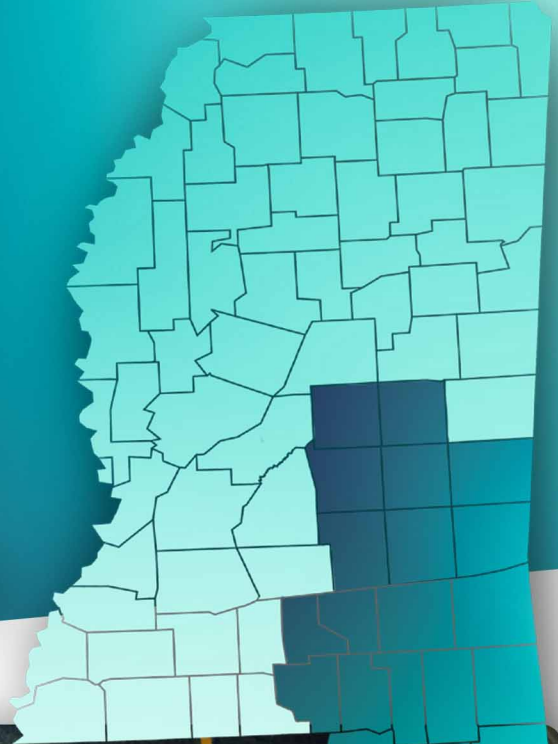


Stennis Industrial Site

► Stennis Space Center, MS 39529



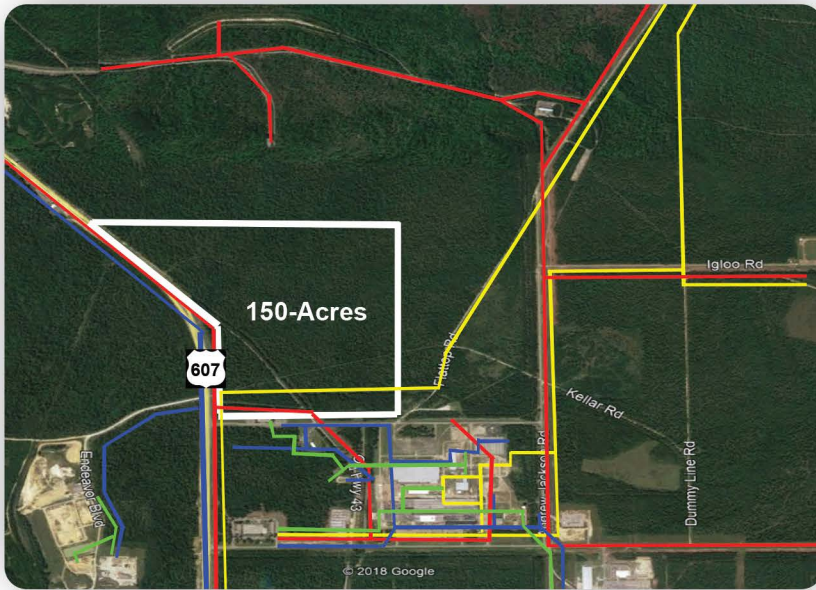
John C. Stennis Space Center is a multi-disciplinary, multi-tenant federal facility with more than 30 resident agencies engaged in a broad spectrum of initiatives, including data storage, geospatial and earth sciences, satellite and rocket assembly and jet engine testing. Surrounded by a 125,000-acre acoustic buffer zone, Stennis Space Center's original mission was to test rocket engines for NASA. Today, next generation rockets are tested at the Center's rocket engine test stands for space exploration.

Enterprise Park is a newly designated 1,100-acre development within Stennis Space Center designed to promote commercial development partnerships within the gates of Stennis. This area of Stennis Space Center offers a unique location opportunity through a certified, 150-acre industrial site. Enterprise Park is near I-10 and I-59 with easy access to two commercial airports and three ports.

General Site Overview

- **Location:** Lat. 30.395329 / Long. -89.622801
- **City:** Stennis Space Center
- **County:** Hancock
- **Site ownership:** U.S. Government
- **Site acreage:** 150 acres / 60.70 hectares
- **Developable acreage:** 150 acres / 60.70 hectares
- **Land for purchase/lease:** Lease
- **Distance to interstate/highway:** 6 miles to I-10 and I-59
- **Rail service:** No

Site Utilities



- ▶ **Electric lines:** 13 kV
- ▶ **Natural gas:** 11" line at 50 PSI on-site
- ▶ **Water line size:** 16"
Water system capacity: 7 MGD
Excess water capacity: 3.1 MGD
- ▶ **Wastewater**
Wastewater system capacity: .345 MGD
Excess wastewater capacity: .243 MGD

Workforce Data

- **Civilian Labor Force:** 246,769
- **Unemployed:** 10,201
- **Unemployment Rate:** 6.0
- **Employed:** 236,568

Technical Studies and Reports:

- Phase I Environmental Survey Assessment
- Endangered species
- Cultural resources
- Geotechnical Report
- Wetlands Report