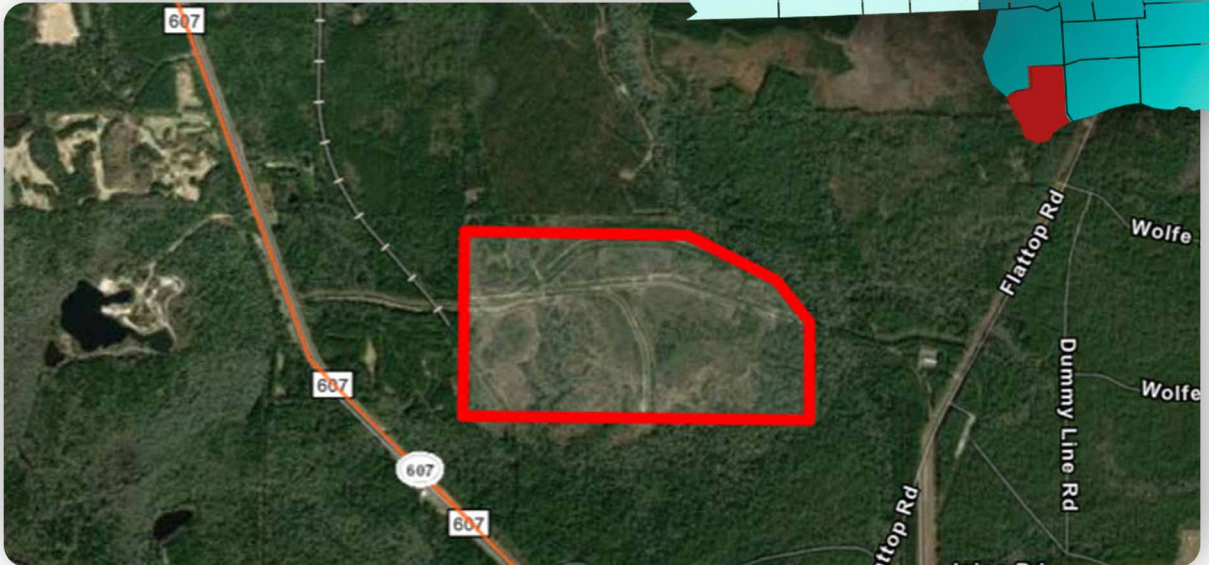
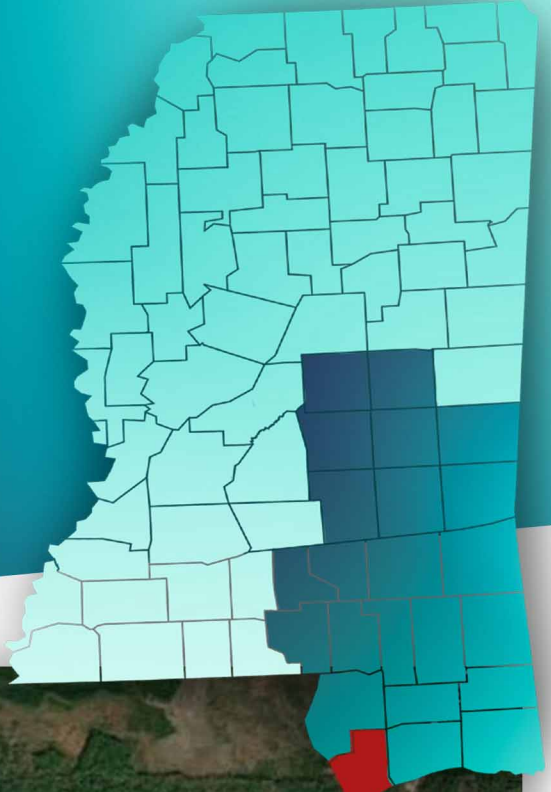


Stennis Industrial Park

▶ Stennis Space Center, MS 39529



John C. Stennis Space Center is a multi-disciplinary, multi-tenant federal facility with more than 30 resident agencies engaged in a broad spectrum of initiatives, including data storage, geospatial and earth sciences, satellite and rocket assembly and jet engine testing. Surrounded by a 125,000-acre acoustic buffer zone, Stennis Space Center's original mission was to test rocket engines for NASA. Today, next generation rockets are tested at the Center's rocket engine test stands for space exploration.

Enterprise Park is a newly designated 1,100-acre development within Stennis Space Center designed to promote commercial development partnerships within the gates of Stennis. This area of Stennis Space Center offers a unique location opportunity through a certified, 250-acre industrial park, with 190 developable acres. Enterprise Park is near I-10 and I-59 with easy access to two commercial airports and three ports.

General Site Overview

- **Location:** Lat. 30.41094 / Long. -89.62379
- **Site acreage:** 250 acres / 101.17 hectares
- **Distance to interstate/highway:** 8 miles to I-10 and 5.5 miles to I-59
- **County:** Hancock
- **Developable acreage:** 190 acres / 76.89 hectares
- **Rail service:** No
- **Site ownership:** U.S. Government
- **Land for purchase/lease:** Lease

Site Utilities



- ▶ **Electric lines:** Mississippi Power | 13 kV
- ▶ **Natural gas:** 10" line at 50 PSI on-site
- ▶ **Water line size:** 14"
Water system capacity: 11.5MGD
Excess water capacity: 11.2 MGD
- ▶ **Wastewater line size:** 8"
Wastewater system capacity: 1.5 MGD
Excess wastewater capacity: .824 MGD

Workforce Data

- **Civilian Labor Force:** 249,861
- **Unemployed:** 8,644
- **Unemployment Rate:** 3.7
- **Employed:** 241,217

Technical Studies and Reports:

- Phase I Environmental Survey Assessment
- Endangered species
- Cultural resources
- Geotechnical Report
- Wetlands Report