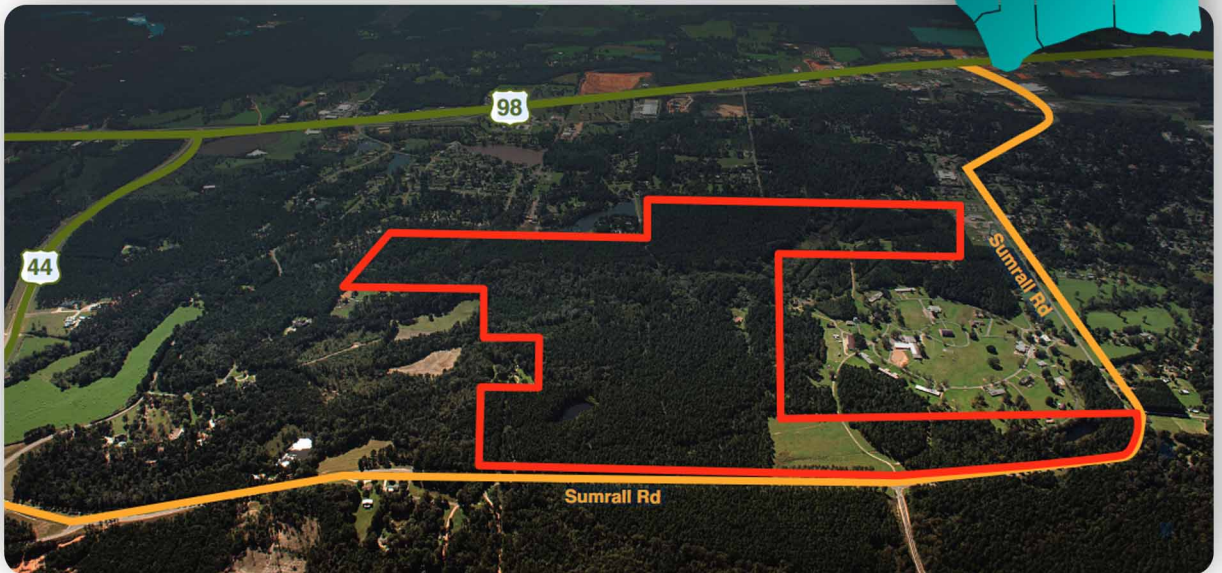
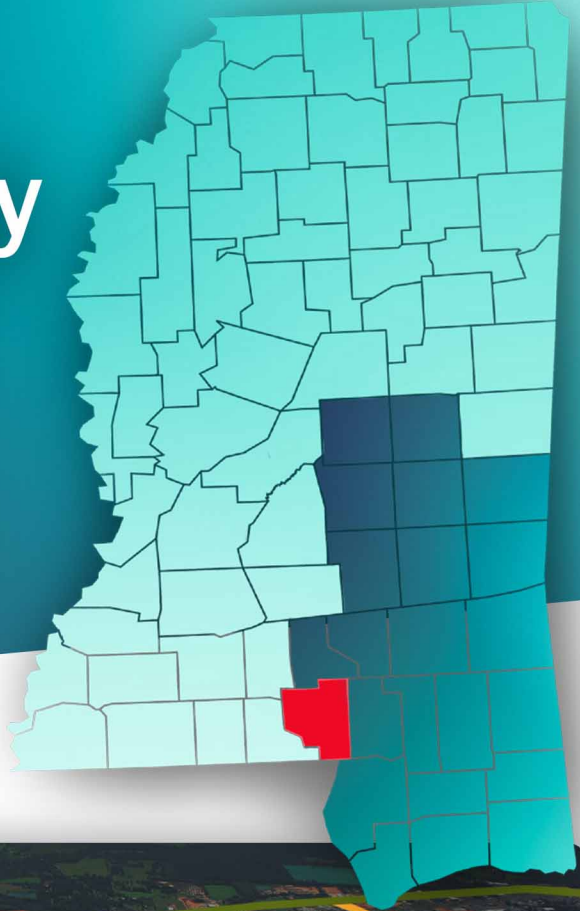


# Marion County IndustryPlex

► Columbia, MS 39429

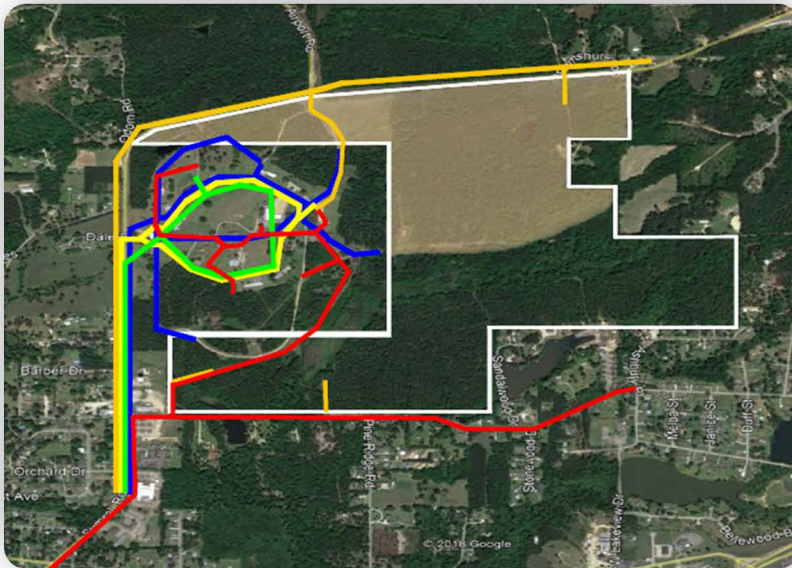


Marion County IndustryPlex is a master-planned industrial park strategically located along the newly improved U.S. Highway 98 bypass. This publicly-owned, 339-acre park offers favorable topography and ready infrastructure. The Marion County IndustryPlex is adjacent to an established business park with a growing tenant base. This site has access to a qualified workforce pipeline which draws from an 11-county region, including the greater Hattiesburg labor market.

# General Site Overview

- **Location:** Lat. 31.266377 / Long. -89.794243
- **City:** Columbia
- **County:** Marion
- **Site ownership:** Public
- **Site acreage:** 339 acres / 137.19 hectares
- **Developable acreage:** 339 acres / 137.19 hectares
- **Land for purchase/lease:** Purchase or lease
- **Distance to interstate/highway:** Less than 2 miles from Highway 98
- **Rail service:** No

# Site Utilities



- ▶ **Electric lines:** Mississippi Power | 12.47 kV
- ▶ **Natural gas:** 6" line at 45 psi
- ▶ **Water line size:** 10"  
**Water system capacity:** 4.3 MGD  
**Excess water capacity:** 1.8 MGD
- ▶ **Wastewater line size:** 8"  
**Wastewater system capacity:** 1.47 MGD  
**Excess wastewater capacity:** 0.4 MGD

# Workforce Data

- **Civilian Labor Force:** 77,350
- **Unemployed:** 2,760
- **Unemployment Rate:** 3.9
- **Employed:** 74,590

# Technical Studies and Reports:

- Phase I Environmental Survey Assessment
- Endangered species
- Cultural resources
- Geotechnical Report
- Wetlands Report