

Helena Industrial Complex

▶ Helena, MS 39562

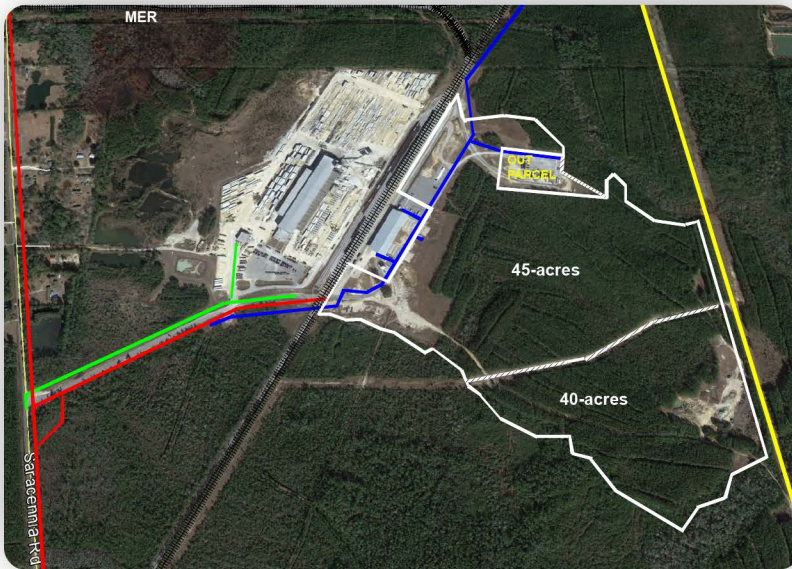


The Helena Industrial Park is located in Jackson County adjacent to the Mississippi Export Railroad line and is approximately six miles from I-10. Owned by the Mississippi Export Railroad, these 45-acre and 40-acre sites are situated within a 125-acre park which is zoned light industrial. The Helena Industrial Park is an established park with current tenants consisting of Tindall Corporation's pre-stress concrete facility, Airgas and Mississippi Export Railroad's 40,000-square-foot bulk storage warehouse. The site is rail served with interconnects to the Canadian National, CSX, Canadian Pacific-Kansas City and Norfolk Southern main line railroads.

General Site Overview

- **Location:** Lat. 30.51055 / Long. -88.48612
- **Site acreage:** 125-acres / 50.59 hectares
- **Distance to interstate/ highway:** Site approximately 4.3 miles from Highway 63
- **County:** Jackson
- **Developable acreage:** 85-acres / 34.39 hectares
- **Rail service:** Yes (Mississippi Export Railroad)
- **Site ownership:** Private
- **Land for purchase/ lease:** Purchase or lease

Site Utilities



- ▶ **Electric lines:** Singing River Electric Power Association I 13.2 kV
- ▶ **Natural gas:** 16" line at 300 psig
- ▶ **Water line size:** 8"
Water system capacity: 5.5 MGD
Excess water capacity: 2 MGD
- ▶ **Wastewater line size:** 8"
Wastewater system capacity: 3.0 MGD
Excess wastewater capacity: 1.0 MGD

Workforce Data

- **Civilian Labor Force:** 355,215
- **Unemployed:** 10,548
- **Unemployment Rate:** 3.9
- **Employed:** 344,667

Technical Studies and Reports:

- Phase I Environmental Survey Assessment
- Endangered species
- Cultural resources
- Geotechnical Report
- Wetlands Report